



Enertechnix

Inspection Services

Plant-wide solutions for superior online visibility and temperature analysis

Enertechnix offers an advanced approach to inspection services by applying the full extent of our expertise in imaging products and technology to your unique requirements. We have a proven track record of helping industries using high-temperature processes—including power generation, waste-to-energy, pulp and paper, petrochemical and cement—see internal boiler and furnace conditions safely and effectively. These improved views allow real-time assessments, enabling you to optimize your boiler operations and pre-outage activities.

Comprehensive Observation and Analysis at Full Load



PyrOptix™ Mobile IR Camera System

Our experienced field service technicians provide video inspections of your boiler and key boiler areas, providing a wide range of benefits.

Inspection of internal boiler conditions:

- Higher boiler availability
- Reduced risk of catastrophic failure
- Improved heat transfer efficiency
- Pre-outage assessments based on current conditions

Inspection of key boiler components:

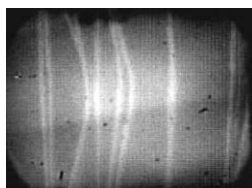
- Identification of air leakage to improve heat rate
- Visibility of burner ignition points and tilt angle conditions
- Reduced risk of equipment failure
- Real-time equipment evaluation

PyrOptix Inspection Examples

Enertechnix PyrOptix™ IR inspection cameras provide superior online visibility and temperature analysis. PyrOptix is able to see through obscuring dust and gas to depths of 80 feet, allowing monitoring of developments anywhere in the combustion chamber.



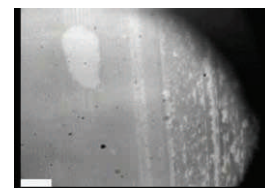
Lost Sootblower Nozzle



Tube Damage



Slag Buildup



Impending Slag Fall



Electrical Hot Spots



Economizer Areas

Conducted while your boiler or furnace is in operation, our inspection services allow you to stay online longer. We provide a detailed report containing video footage and analysis of slag deposits, burner condition and cleaning performance.

Learn more at www.Enertechnix.com, or call (425) 432-1589 for more information.



Inspection Services

Plant-wide solutions for superior online visibility and temperature analysis

Enertechnix provides visible inspections of key boiler components at full load conditions with the PyroRemote™ inspection camera system.



**PyroRemote™
Inspection Camera**



**PyroRemote
Camera Monitor**



**Assembly of Sections
to Variable Lengths**

PyroRemote Inspection Examples



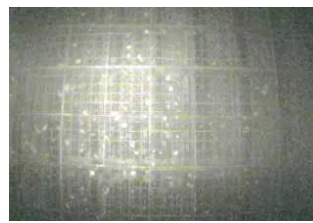
**Economizer—
Sonic Horn Cavity**



Air Heater Seal / Basket



**SCR Exit—SBS Injectors
Inspection**



**SCR Exit—Catalyst
Entrance Inspection**

Additional inspection capabilities include:

- Economizer exit selective catalytic reduction (SCR) screen entrance
- SCR ammonia injectors
- SCR air ducts and dampers
- Precipitator exits, ducts and vanes

Our field service representatives work in conjunction with, and under the supervision of, your plant-assigned personnel. Our services include initial setup and dismantling of equipment, and inspection based on your specific requirements. We also offer operations training and usage supervision.

All video is captured with Enertechnix devices and is provided to you via an SD card or on the device of your choice. We offer complete assistance in transferring video images to your viewing equipment and are always available to answer questions.



About Enertechnix

Enertechnix develops and commercializes innovative technologies for process and environmental monitoring to improve the efficiency, cleanliness and safety of large-scale energy conversion processes.

Learn more at www.Enertechnix.com, or call (425) 432-1589.

Contact Enertechnix for a complimentary inspection review and services proposal.

Ask our sales representatives about how you can apply inspection services fees toward the purchase of any of our imaging equipment.

Enertechnix, Inc.
PO Box 469
Maple Valley, WA 98038

Phone: (425) 432-1589
Fax: (425) 432-1557
Email: sales@enertechnix.com